

Year 4

Autumn Term 2023 Journey to another world

What kinds of animals live in Aldershot? You have probably seen birds in trees and shrubs, or listened to their songs. You may have spotted small mammals such as mice, rabbits and squirrels. Perhaps you have seen frogs or ducks near a pond, or noticed bees pollinating flowers. Maybe you've even glimpsed an occasional spider in your house! All of these are examples of urban wildlife. In an ever growing world, we look at our local geography and evaluate human impact, both positive and negative. We will also be exploring other worlds through the rest of our curriculum to inspire the one we would like to live in.

Useful Websites

- <http://www.ticesmeadow.org/>
- <https://classroom.thenational.academy/units/local-fieldwork-6adb>
- <https://www.montpelierschool.net/wp-content/uploads/2021/07/Yr-5-Local-Area-Study-Knowledge-Mat.pdf>
- <https://www.bbc.co.uk/bitesize/subjects/zbkw2hv>

Suggested Reading

- Maps of the United Kingdom— Rachel Dixon & Ms. Livi Gosling
- Tin Forest—Helen Ward
- We Are Water Protectors - Carole Lindstrom
- The Fog by Kyo Maclear
- Counting in Green by Hollis Kurman
- Thank You, Earth: A Love Letter to Our Planet by April Pulley Sayre

Suggested Experiences

- Visit all of the local nature reserves our Houses are named after.
- Make a bird feeder or bug hotel and record the animals that visit
- Go on a litter pick walk of your local area and take before and after photos
- Attend a Volunteer work party at Tice's meadow
- Create an area in your garden

Maths

- Number Place Value
- Addition and Subtraction
- Multiplication and Division
- Fractions
- Geometry

English

- Non –chronological report 'Dare to Care –pet dragon'
- Poetry— A Year of Nature Poems
- Narrative—Tam Linn
- Travel brochure—Alice in Wonderland

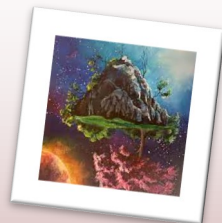
Science: Light and circuits
RE: God and Angels
PSHE: Being me and Celebrating Differences
Art: Sketch, paint and Collage
Computing: How the internet works and Programming games
DT: Puppet Show
Geography: Local study into the Human Impact on our natural world
Spanish: Colours and People
PE: Dance, Multisport, Gymnastics and Tag Rugby
Music: Singing (texture and duration)

How I can help at home

- MathsFrames.co.uk
- Timestables.co.uk
- BBC Bitesize revision
- Maths games

How I can help at home

- <http://www.bbc.co.uk/schools/ks2bitesize/english/>
- <http://www.bbc.co.uk/skillswise/words/grammar/>
- <https://www.topmarks.co.uk/interactive.aspx?cat=49>



Homework

- At least 20 minutes reading 4 times a week
- Practicing spelling at least 4 times a week
- Times table practise daily
- Project homework



Vocabulary

- **Reflection** - The throwing back by a body or surface of light, heat, or sound without absorbing it.
- **Source** - a place, person, or thing from which something starts
- **Conservation**— Stopping the wasteful use of a resource.
- **Habitat**— The environment in which an animal or plant normally lives or grows.
- **Impact**— Have a strong effect on someone or something